



# Grading standard MacBook

cosmetic defects

# Grade A+

## Visual condition

# A+

### Display

- ✓ No more than 3 small scratches up to 5 mm are allowed, which do not have a recess and do not cling to the nail when running over them.

### Body

- ✓ No more than 5 small scratches on the lid or bottom of the case (Top Case) up to 10 mm are allowed, which do not have a recess and do not cling with a nail when running over them.
- ✓ Minor scuffs of the legs are allowed





# Grade A

## Visual condition

# A

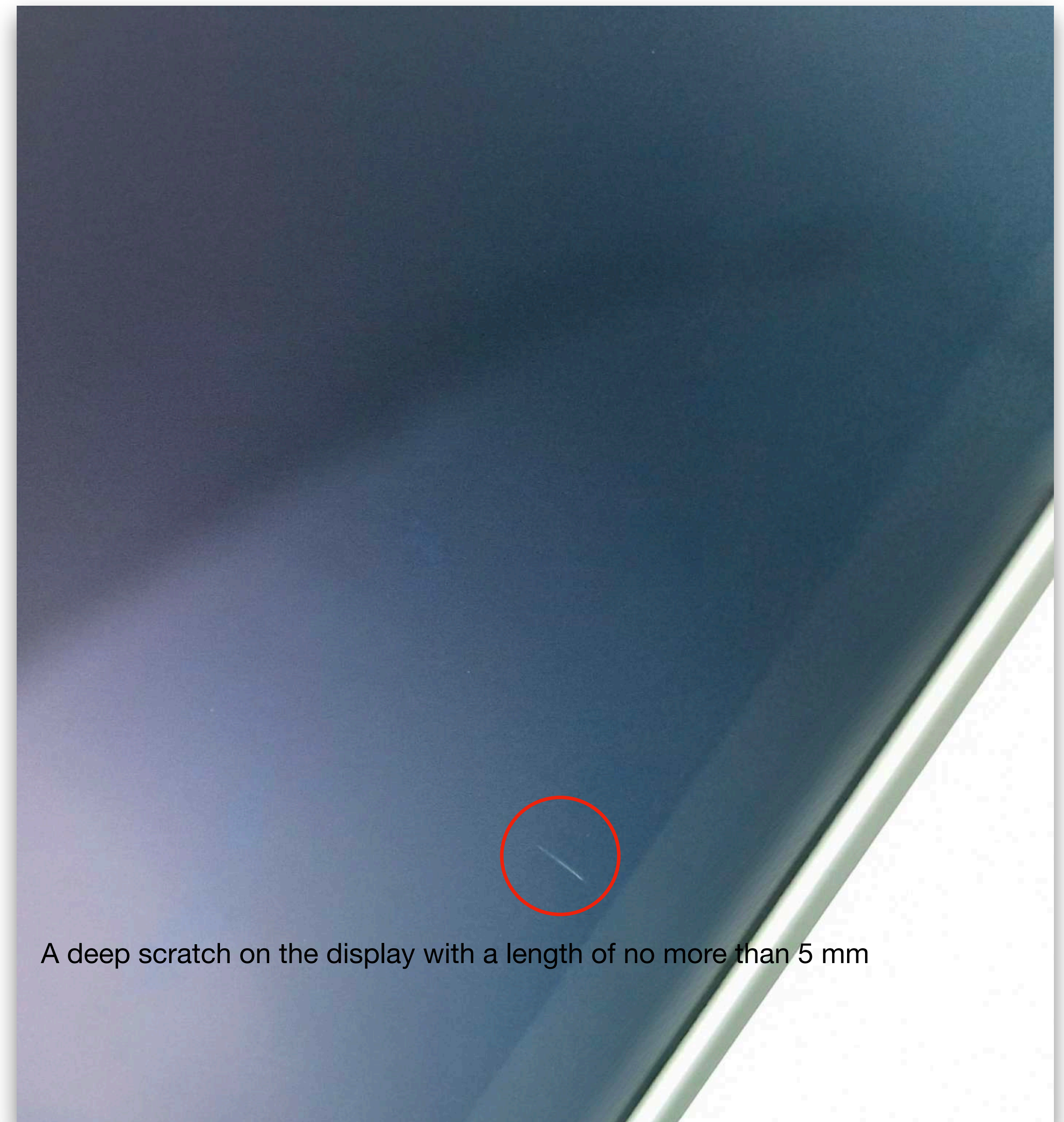
### Display

- ✓ Up to 5 small scratches are allowed, including 1 deep one, with a length of no more than 5 mm

### Body

- ✓ Minor scratches or scuffs on the lower part of the case are allowed, which do not have a recess and do not cling to the nail when running over them. Such scratches and scuffs cannot cover more than 25% of the lower part of the case. No more than 3 deep scratches on the bottom of the case.
- ✓ No more than 10 small scratches are allowed on the lid and top of the case (Top Case), including 2 significant ones, no more than 10 mm long.
- ✓ Single point damage to the housing up to 1 mm.
- ✓ Minor dents without damage to the paintwork, with a diameter of no more than 5 mm.

\* - No more than 3 points on the body at the same time

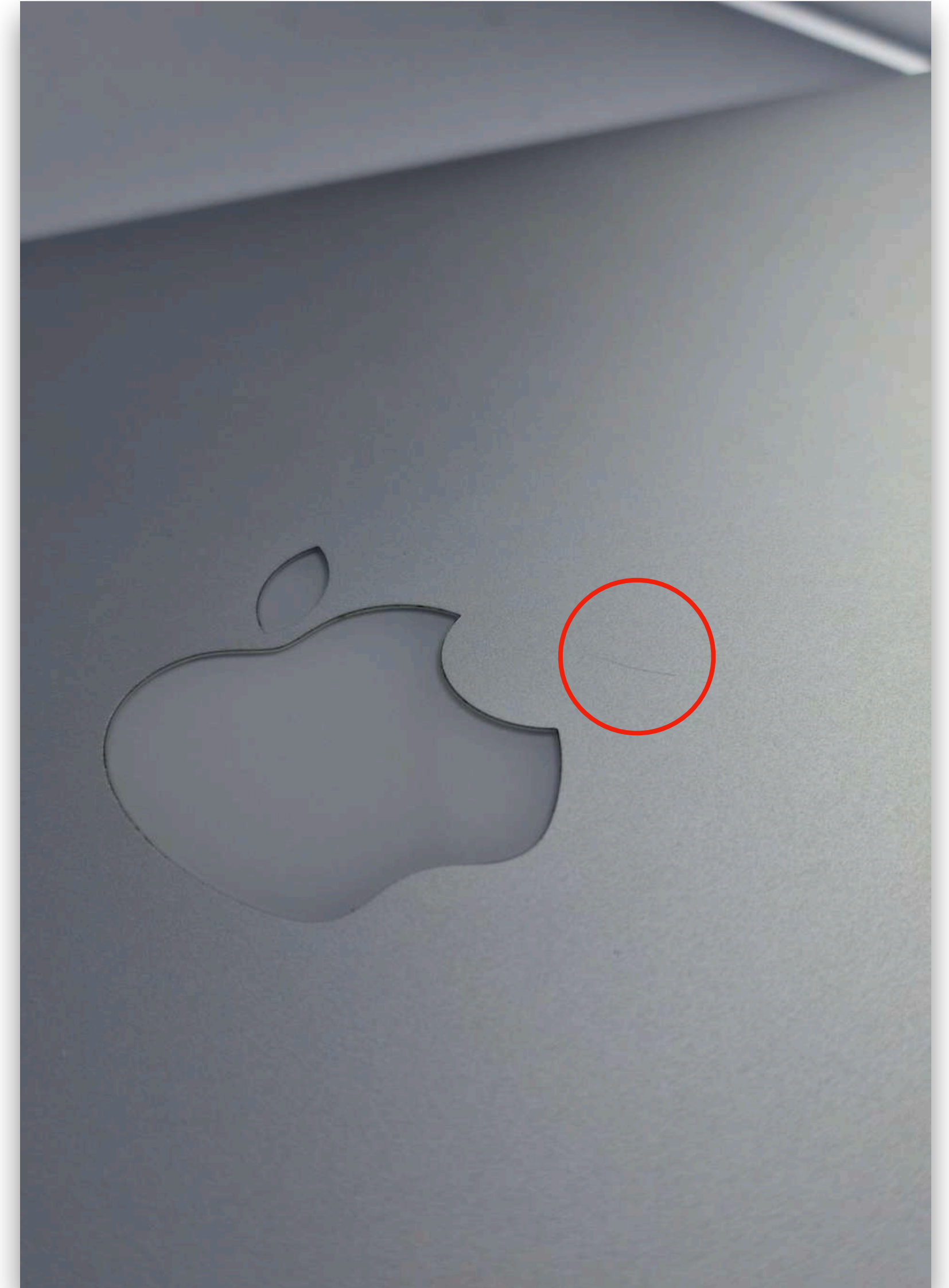
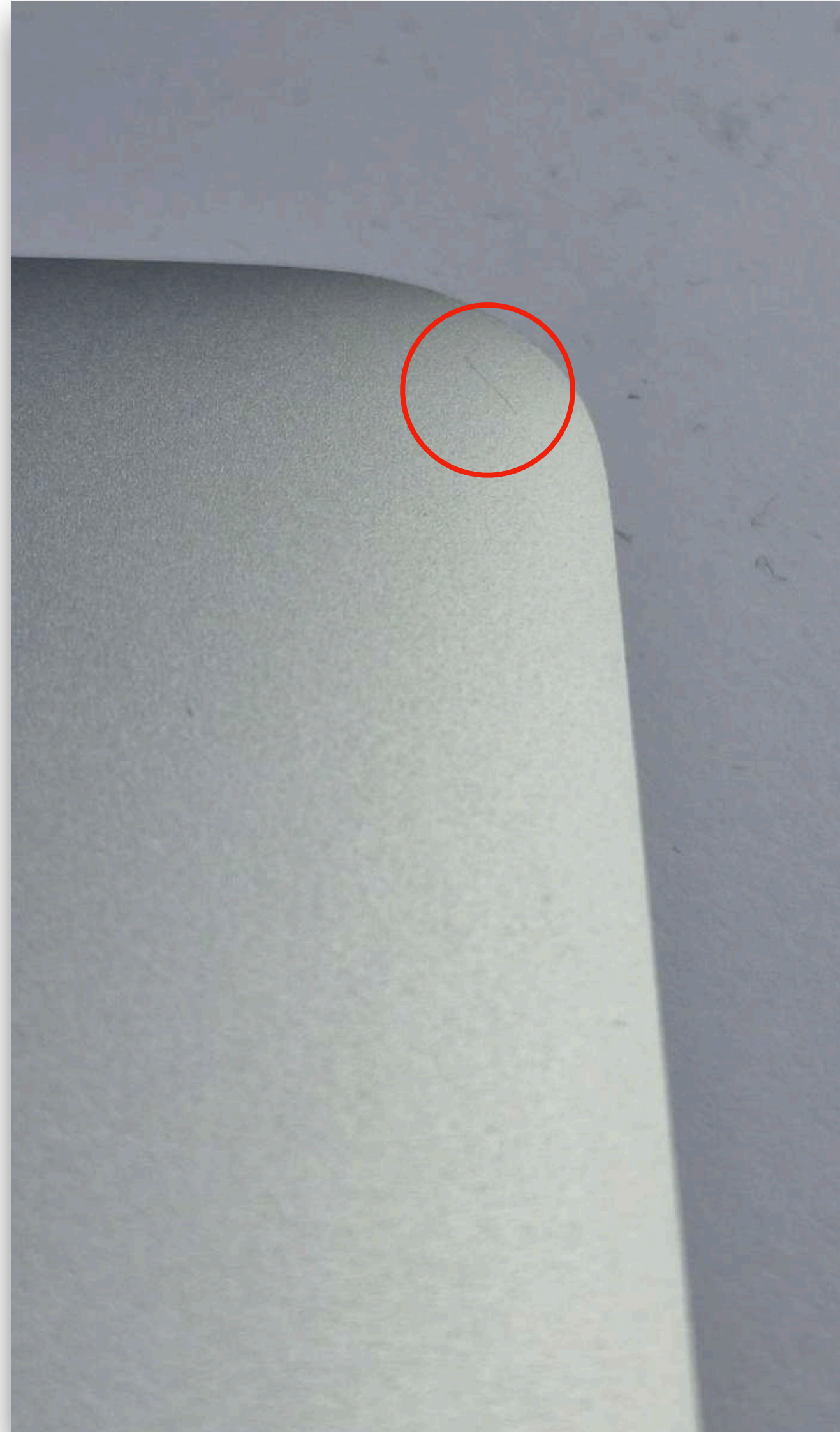
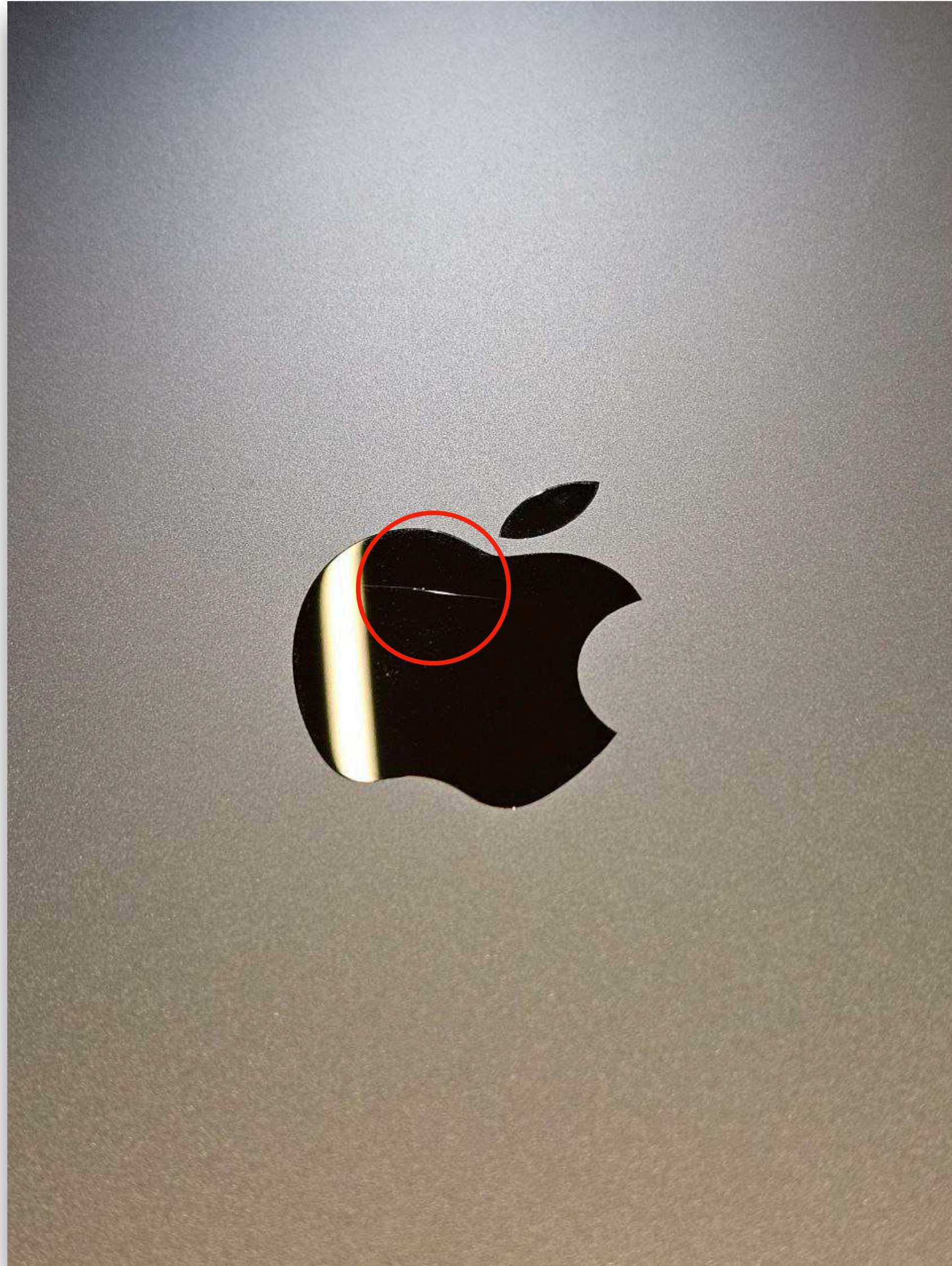


A deep scratch on the display with a length of no more than 5 mm



## Grade A. Minor scratches or scuffs on the case

Cover no more than 25% of the case





## Grade A. Minor dents without damage to the paintwork, spot chips





# Grade B

## Visual condition

# B

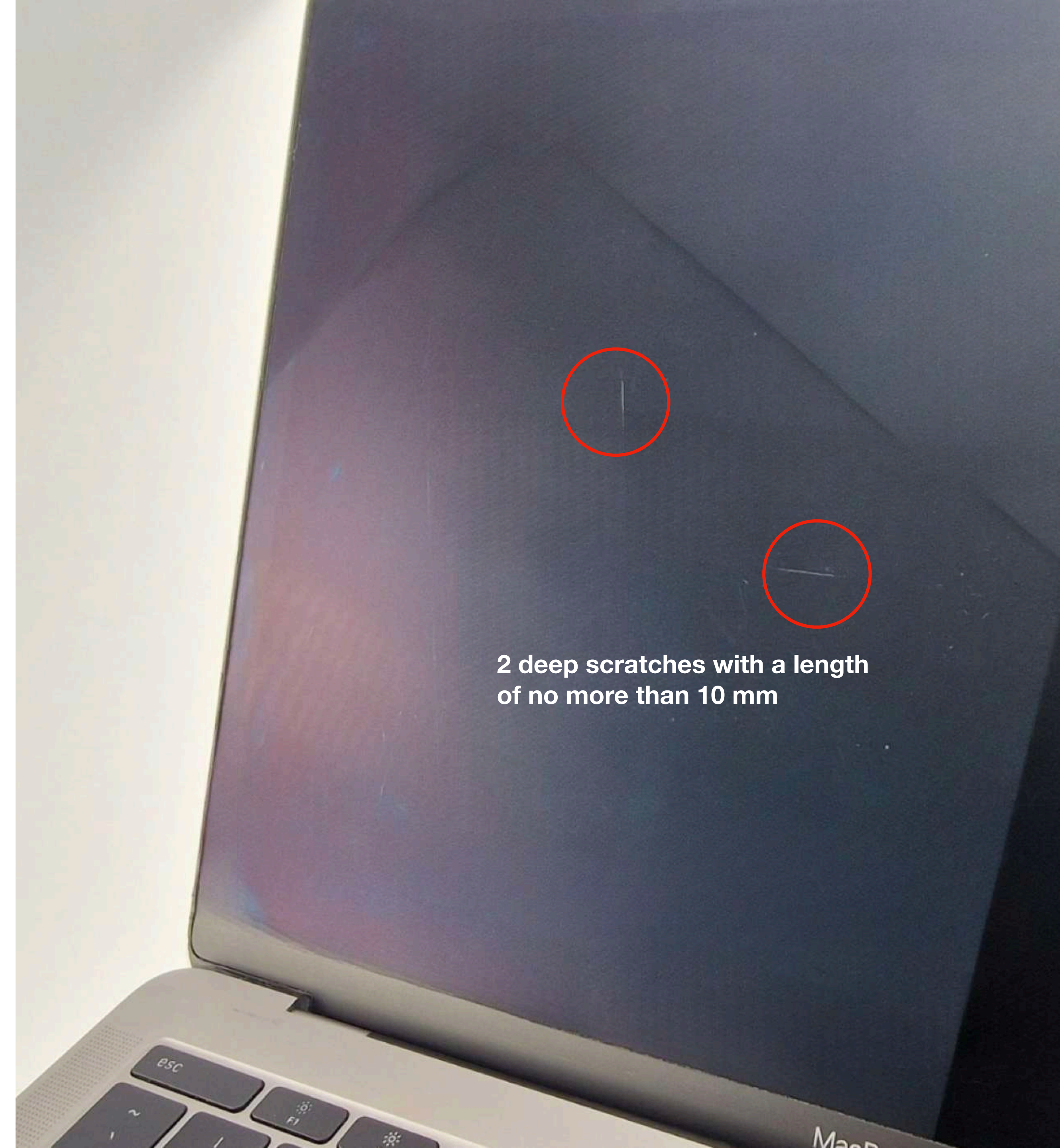
### Display

- ✓ Minor scratches and scuffs are possible, which cover **no more than 50%** of the display, **no more than 2 noticeable scratches are allowed**, **no more than 10 mm**.
- ✓ A single insignificant flare, visible only on a white background, with a diameter of **up to 3 mm**.
- ✓ A minor afterimage that is visible only on a plain white or colored background.

### Body

- ✓ There may be scratches and scuffs covering no more than 50% on the bottom of the case, but no more than 5 **visible** scratches.
- ✓ There may be minor scratches on the lid and top of the case (Top Case) covering no more than 25% of the case, including **3 noticeable** ones, **no more than 25 mm long**.
- ✓ There may be minor dents on the body with **partial** damage to the paintwork, with a diameter of **up to 5 mm**.
- ✓ Spot damage to the paint, **up to 2 mm** in diameter.
- ✓ **Up to 3 spots** all over the body with a diameter of **up to 5 cm**, as a result, the paint fades, without damaging the paintwork

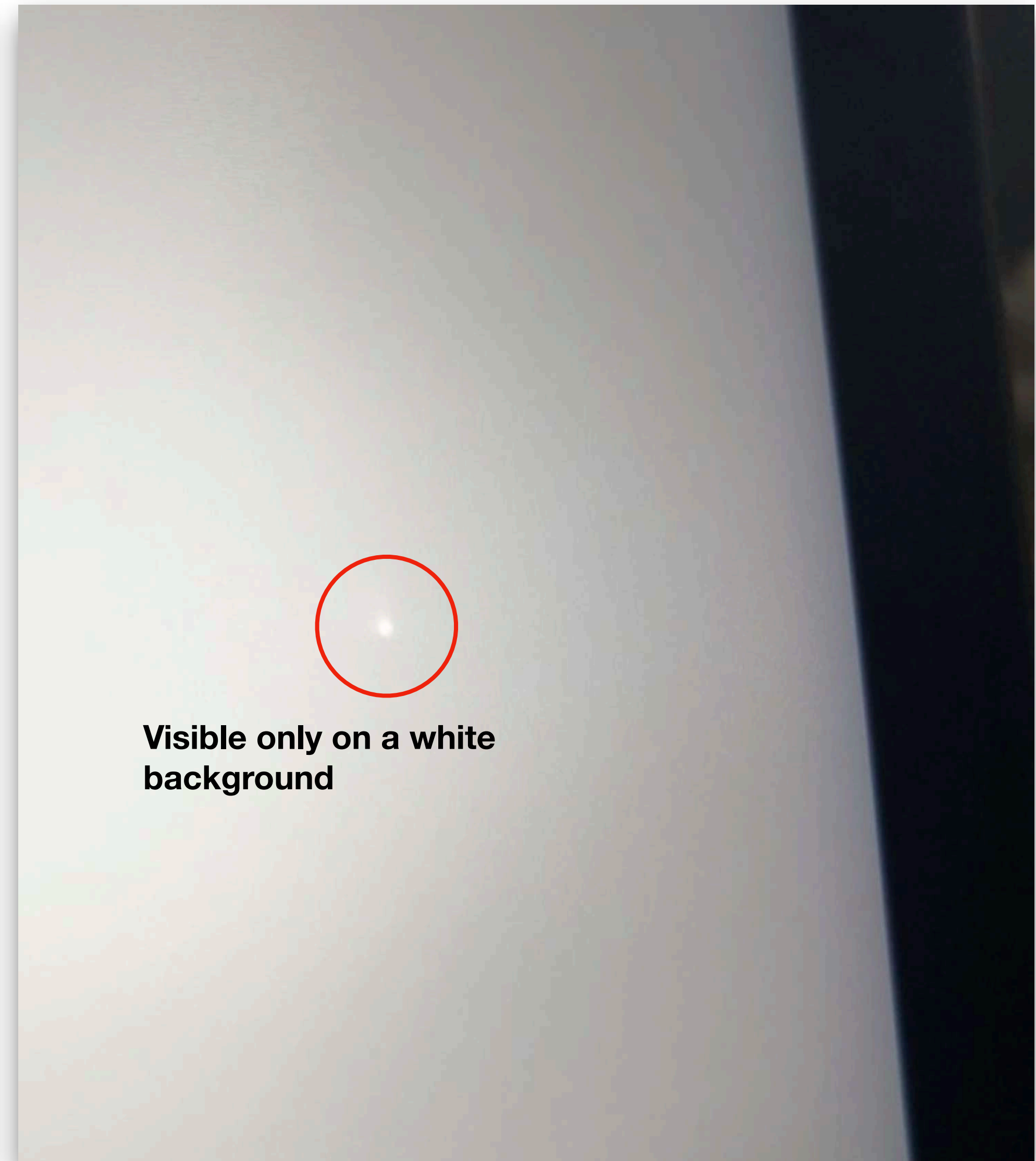
\* - No more than 3 points on the body at the same time



2 deep scratches with a length of no more than 10 mm



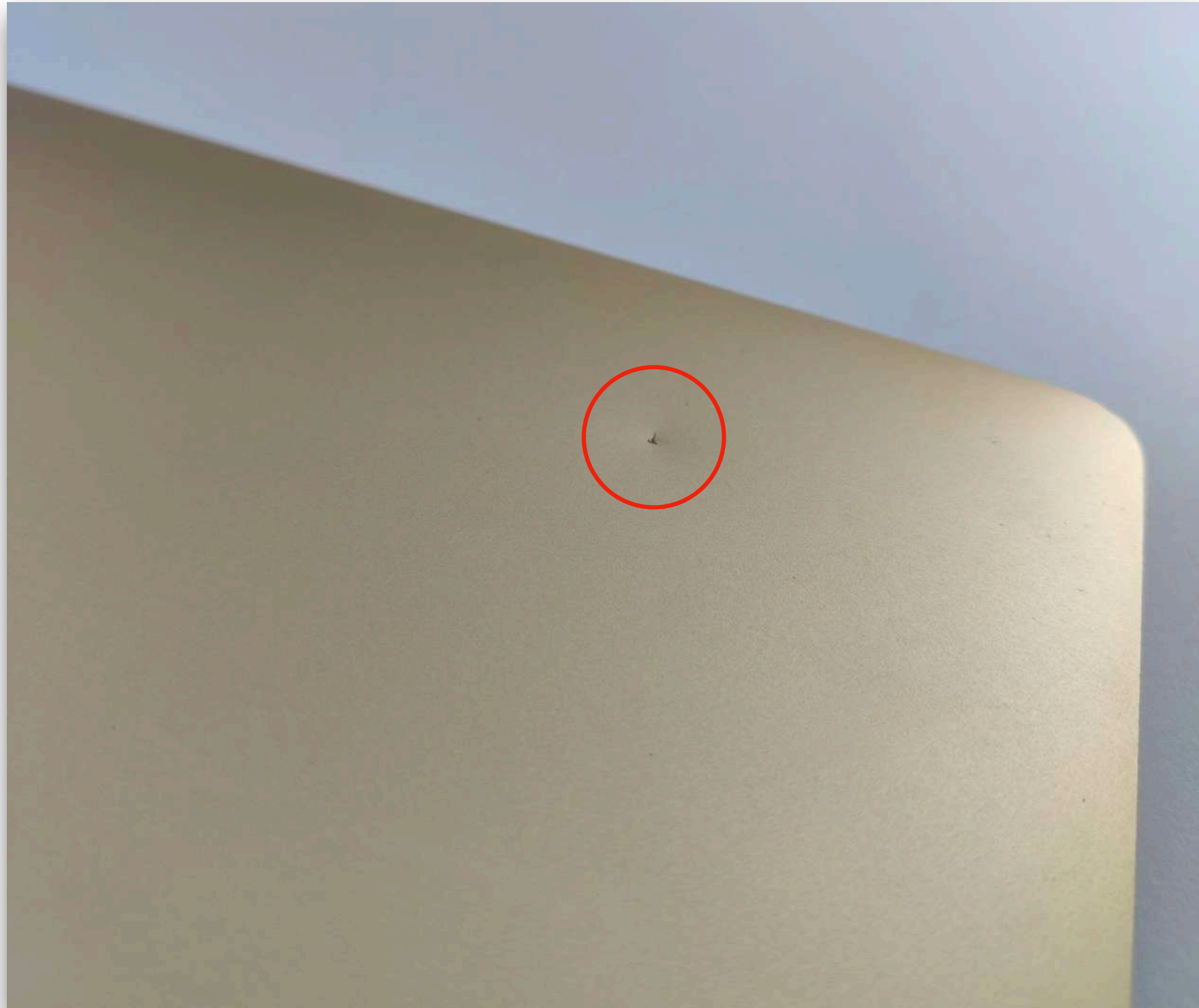
## Grade B. Slight illumination and fading of the case





## Grade B. Minor dents

With partial damage to the paintwork, up to 5 mm in diameter





# Grade C

## Visual condition

### C

#### Display

- ✓ Noticeable scratches are allowed (deep, wide and numerous scratches), up to 3 point chips with a diameter of up to 1 mm.
- ✓ A slight **crack of up to 20 mm**, which is not directed towards the center of the display.
- ✓ **Highlights of more than 3 mm**, visible only on a monochrome background.
- ✓ Partially violation of the anti-glare coating (in the form of traces from the keyboard).
- ✓ Up to 5 broken pixels are allowed.
- ✓ Peeling with a diameter of up to 5 mm.

#### Body

- ✓ Deep chips and dents with damage to the paintwork are allowed.
- ✓ Deep, wide and numerous scratches and scuffs.
- ✓ Significant stains covering **more than 25% of the body surface**.
- ✓ A slight crack on the body up to 25 mm long.
- ✓ The bolts on the lower part of the housing are missing completely or partially.





## Grade C. Deep chips and dents

Obvious signs of impact





## Grade C. Significant stains, scuffs

Scuffs are visible in any lighting and cover more than 25% of the case





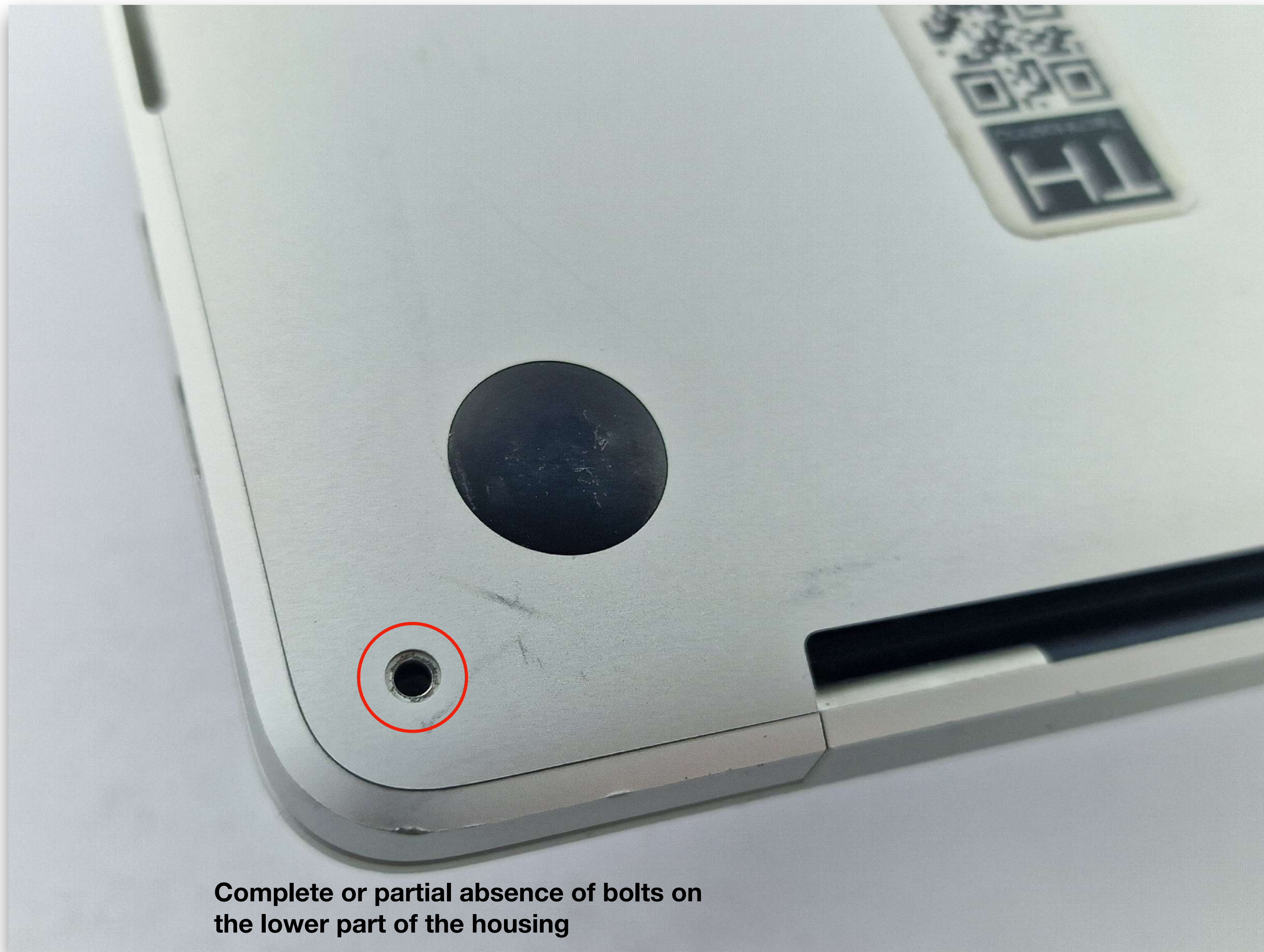
## Grade C. Significant scratches

Deep, wide and numerous



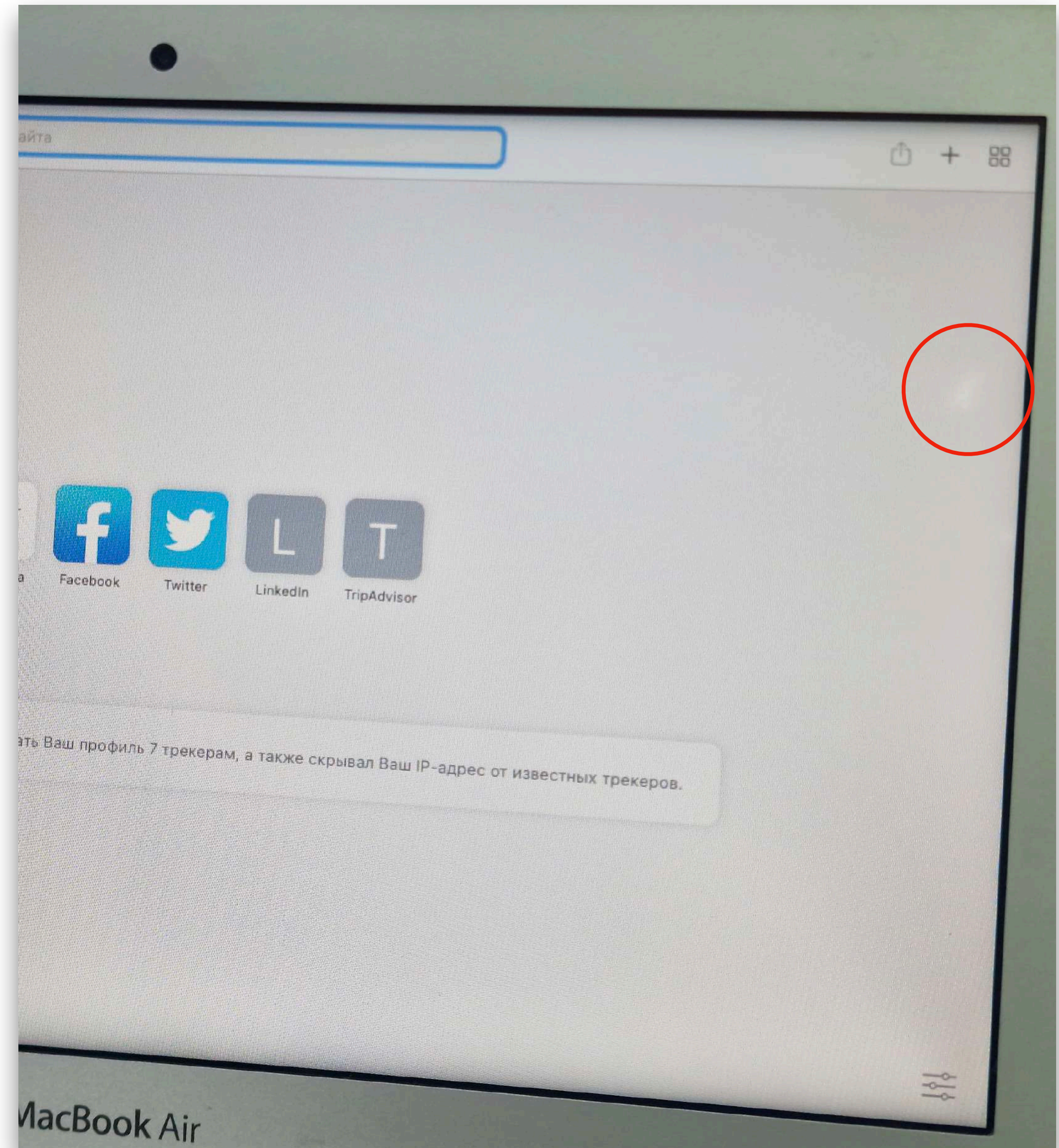
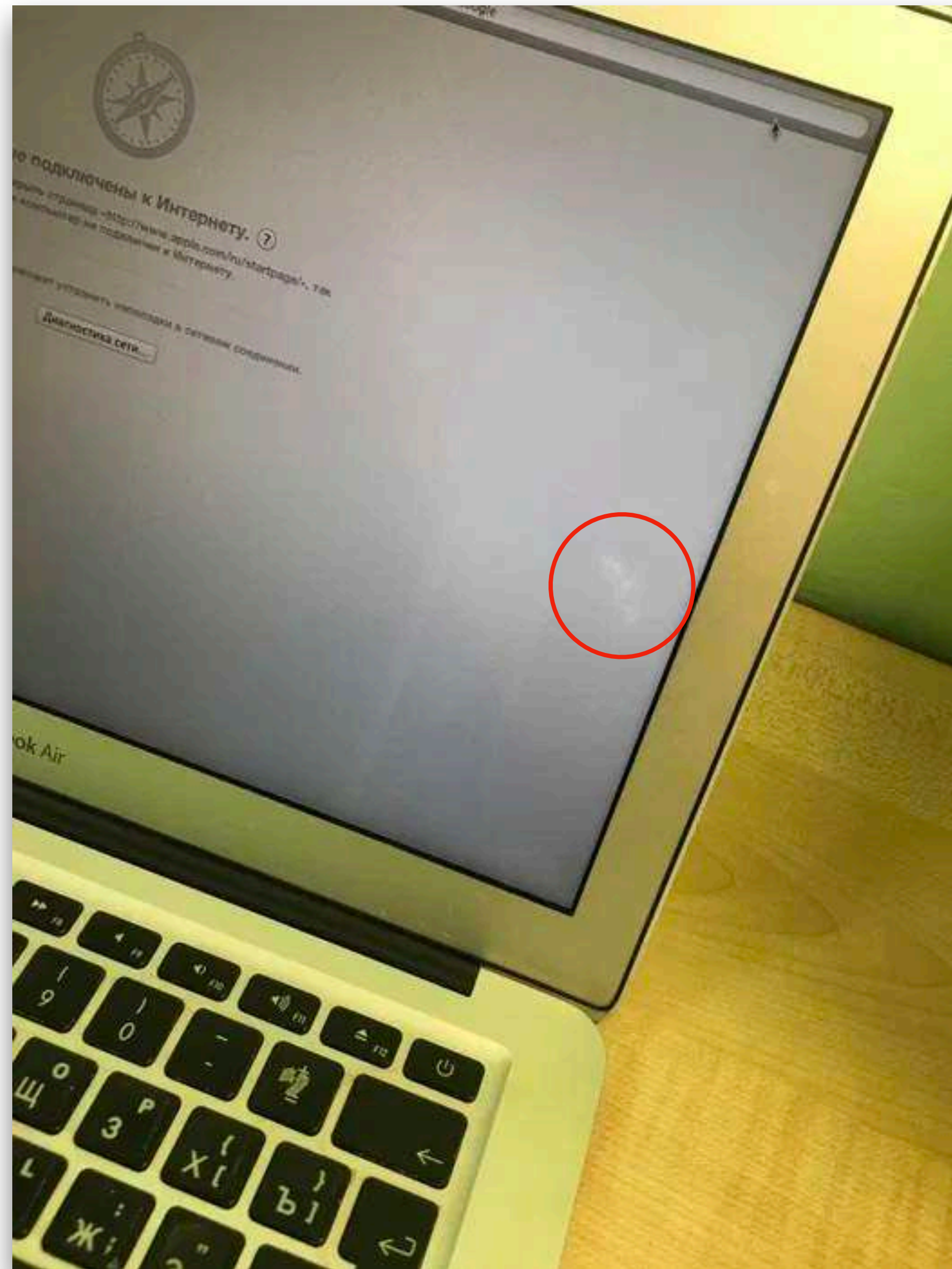


## Grade C. Damage to the housing





## Grade C. Highlights of more than 3 mm, visible only on a plain background





# Grade D

## Visual condition

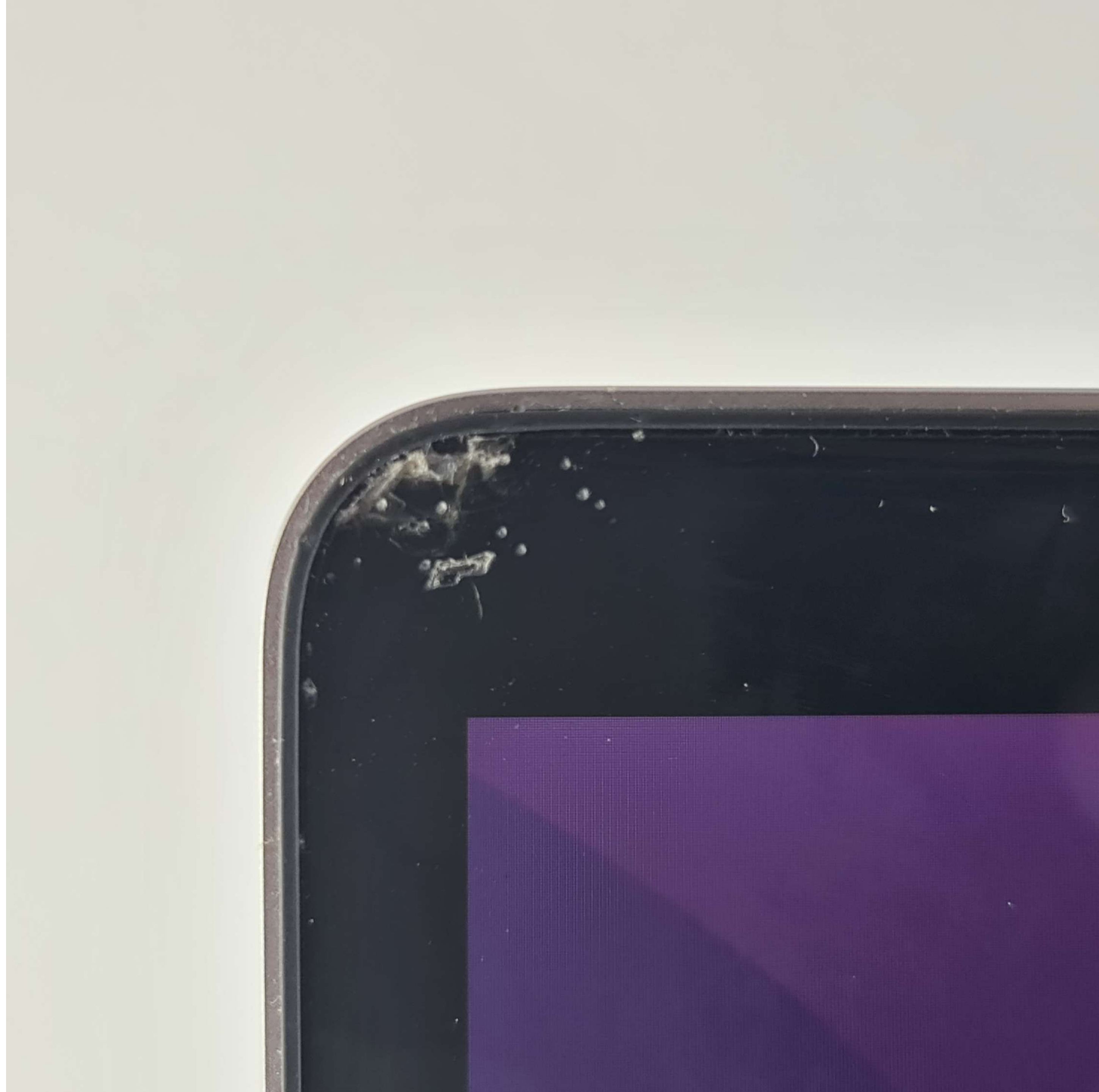
# D

### Display

- ✓ A crack of **more than 20 mm** or broken glass.
- ✓ The detachment is **more than 5 mm** in diameter.
- ✓ Uneven backlight of the display.
- ✓ Significant highlights and an obvious afterimage, noticeable on any background, yellow, grey frame.

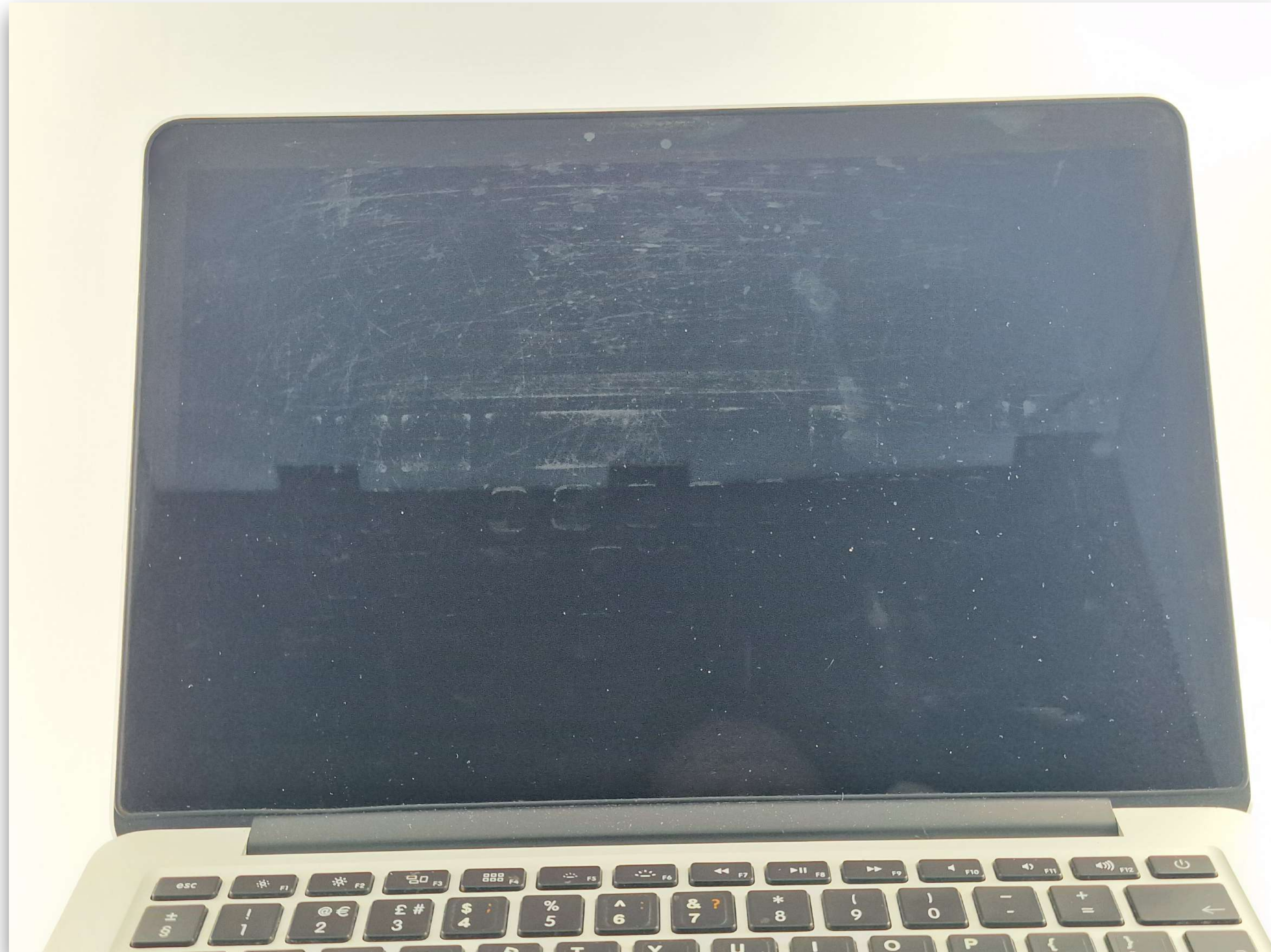
### Body

- ✓ The crack is **more than 25 mm**.
- ✓ One or more legs are missing.
- ✓ Deformation **up to 5 mm** at the point of maximum bending.
- ✓ The display locking mechanism (hinges) is defective



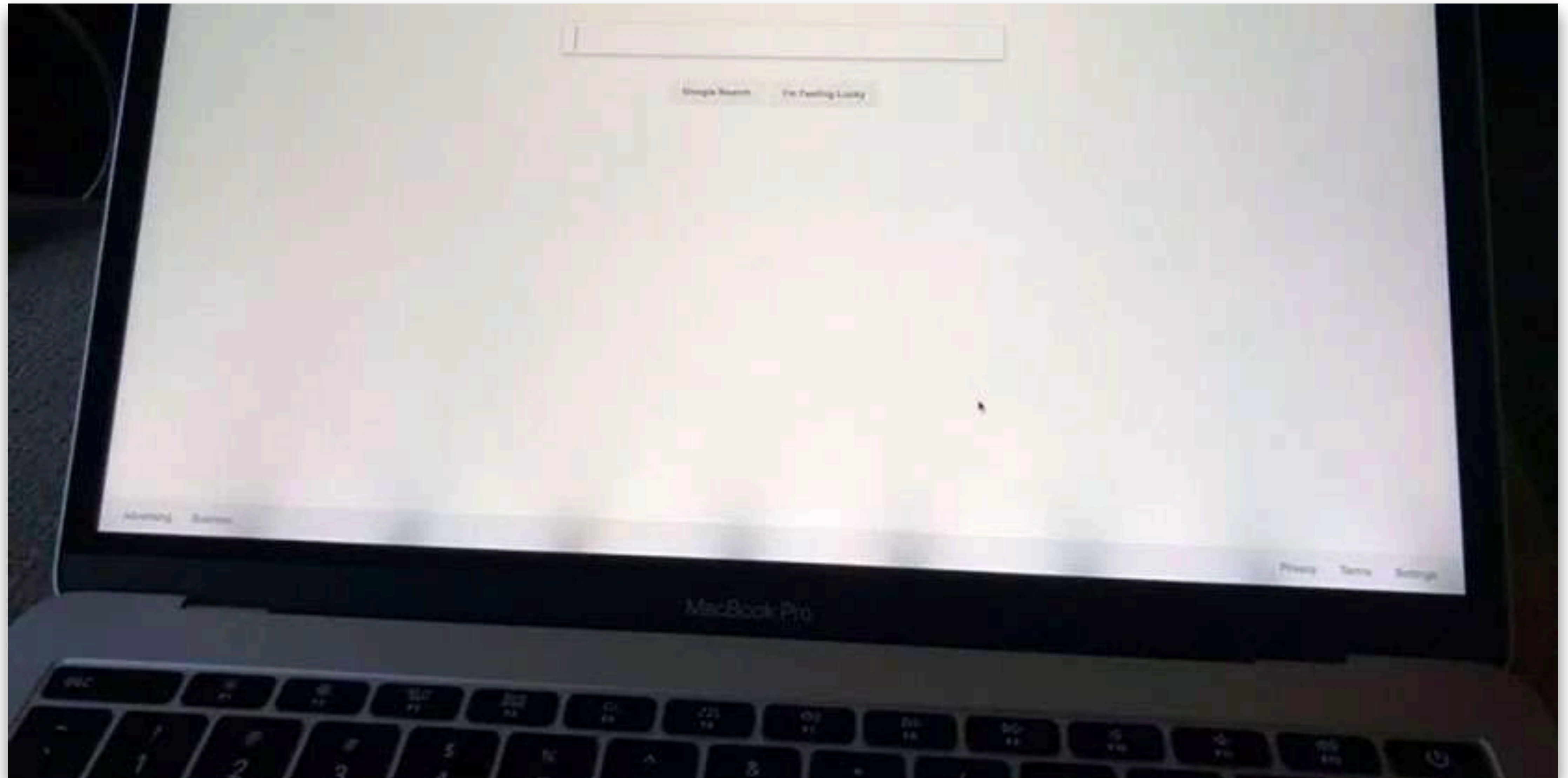


**Grade D. Significant damage to the screen. Scratches cover more than 50% of the display and the anti-glare covering is damaged**





## Grade D. Uneven illumination.





**Grade D. The crack is more than 25 mm. Broken or deformed up to 5 mm at the point of maximum bending.**





## Grade D. Visual damage to the keyboard

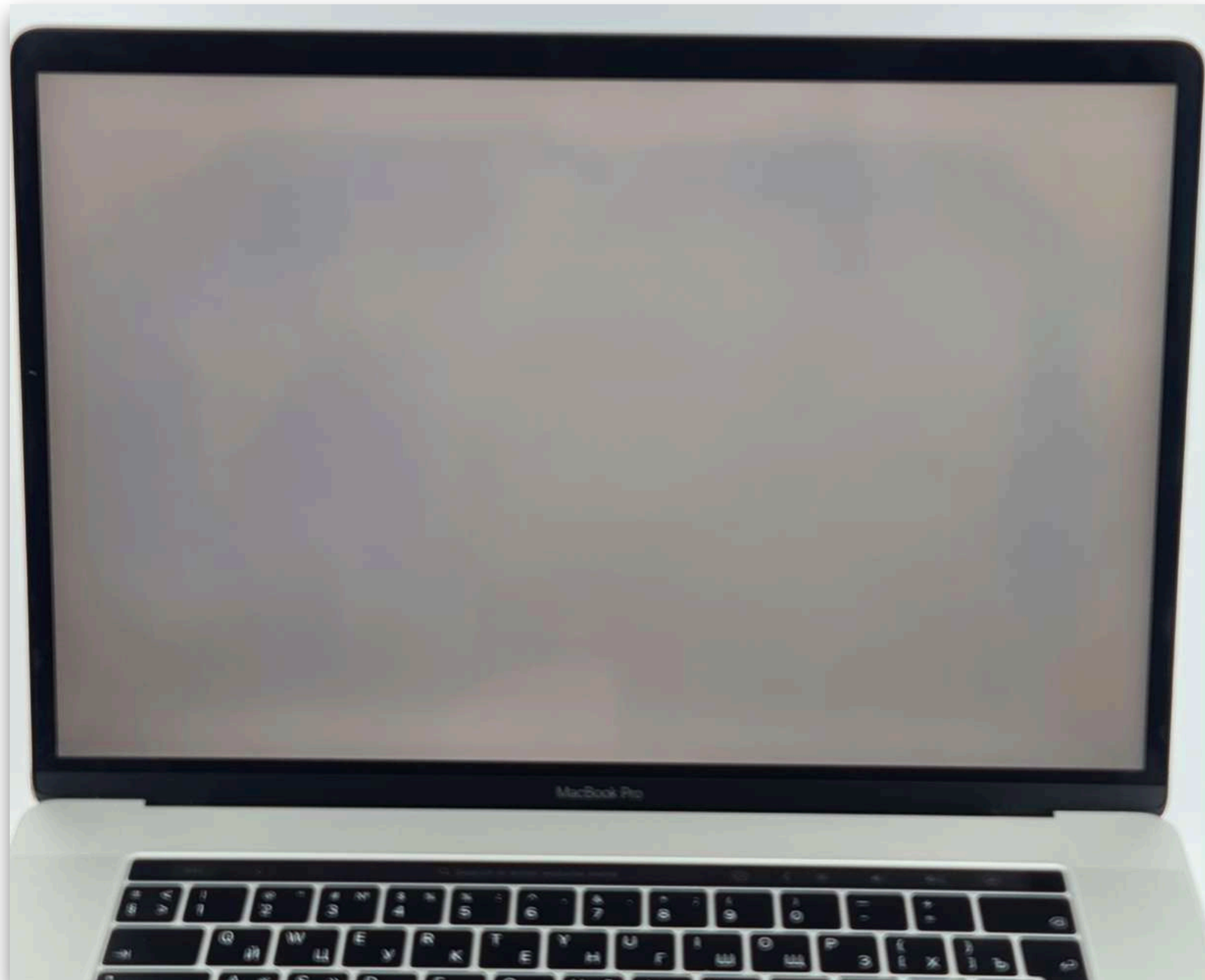
## At the same time, the keys are in working condition





## Grade D. Significant highlights and an obvious afterimage

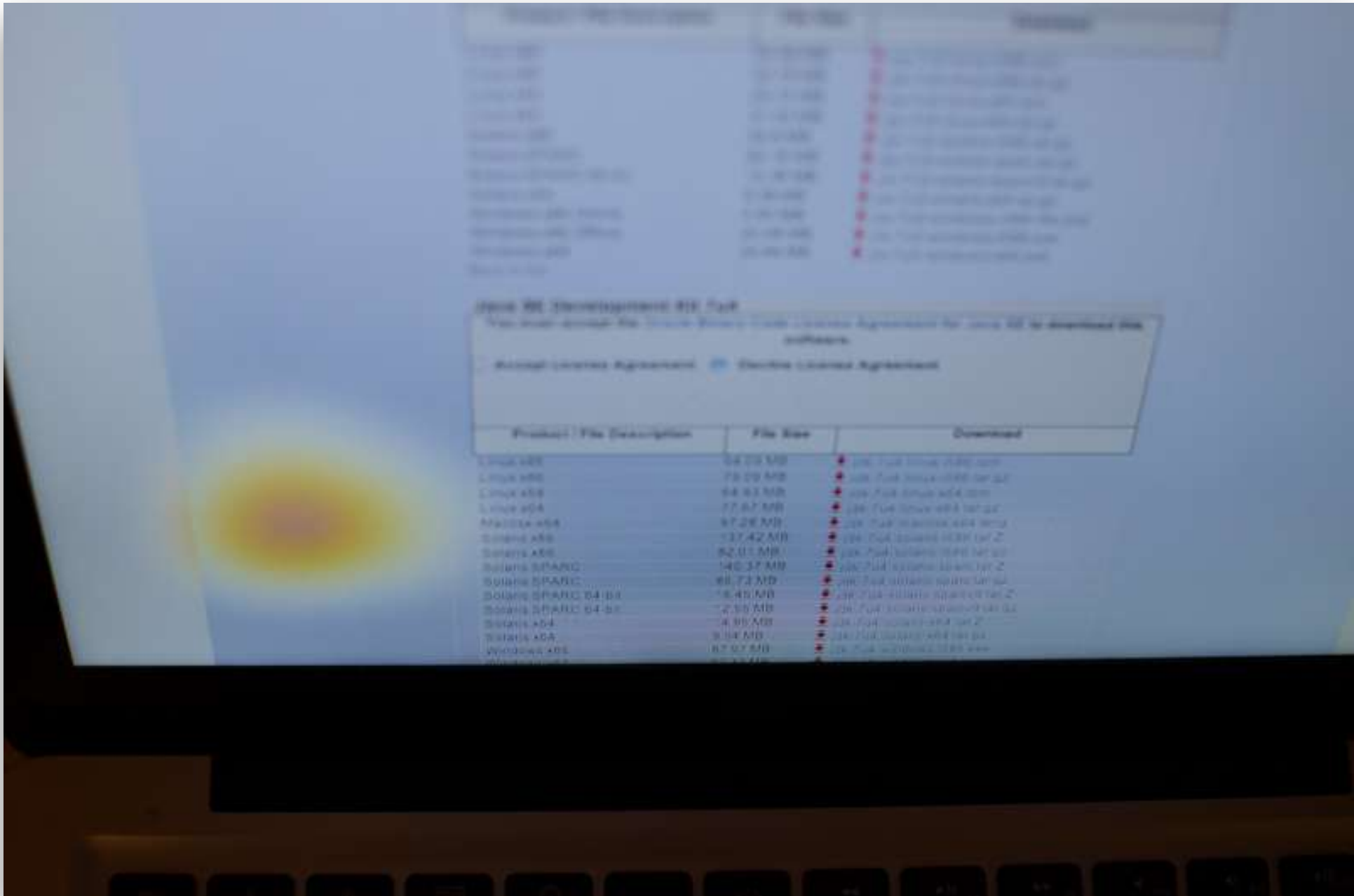
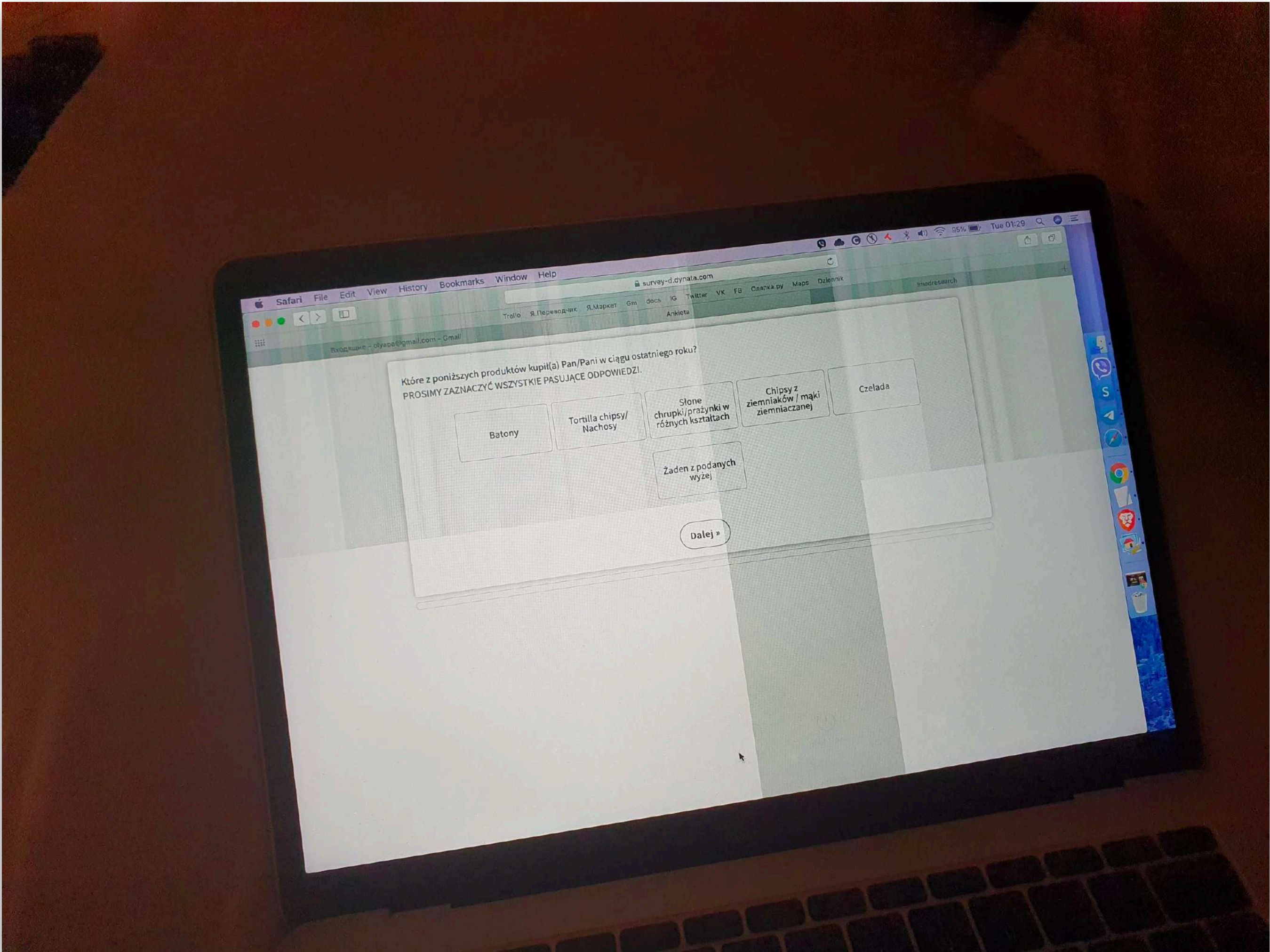
It appears on any background, it is noticeable during normal use of the device





# Grade E. Streaks, spots, peeling

Visible on any background





# Grade E. Deformation of the case does not allow using the MacBook.

More than 5 mm at the point of maximum bending

